

# A **gift** for the next generation



# Thank you for thinking of MS-UK...

We know that the thought of leaving a Will can be daunting but making plans for the future will give you peace of mind, knowing your loved ones will be looked after and your wishes will be honoured. It can feel like a big task, but by creating a Will you can be reassured that everything will be taken care of in the way you wanted it to.

Your Will is completely personal to you and it will be a document that leaves your legacy to the world. When the time is right for you to consider your wishes, we would like to encourage you to leave a gift in your Will to MS-UK.

At MS-UK we want to make sure people living with MS have the support they need to live healthier and happier lives.

**Today and tomorrow.** Your gift, big or small, can make such a difference to our work.

For many years our supporters have left a legacy of hope and inspiration for future generations.

Thank you for thinking about joining them and if you need anything from us, we are always here to help.

Jill Purcell  
**Fundraising Manager**



# In this guide



Why leave a gift

Types of gifts

Questions and answers

Get in touch with MS-UK



# Why leave a gift?

**For over 30 years, MS-UK has been supporting people affected by multiple sclerosis (MS).**

MS is a life-long condition that requires long-term support. There is currently no cure, so for the thousands of people affected across the UK we need to be here, not just today but in the future.

The MS community informs all that we do, so you can be sure that every penny donated to us is spent with care and consideration.

**By putting people affected by MS at the heart of our work, we can make sure that every person who leaves us a legacy is honoured in the right way.**

We are an independent charity so we never accept funding that may jeopardise our ability to act in the best interests of people affected by MS.

By leaving a gift in a Will to MS-UK, people hand down their legacy to the next generation. We could not be here for people affected by MS without this support.



**You have gotten me through some dark times. I hope you will be around for many more years** MS-UK client



## You just understand how I'm feeling

MS-UK Client

Our mission is to improve the understanding of multiple sclerosis and provide support where it is needed most. Every gift that is left means we can offer our services to even more people.

Last year we answered thousands of enquiries through our helpline. Every time we picked up the phone, we were able to be here for someone affected by MS.



**For over 18 years (since diagnosed with MS) of this journey, New Pathways has been like a friend by my side** MS-UK client

Our magazine, New Pathways, shares all the latest news, research, real-life stories and expert advice from professionals. It keeps those living with MS in the know and helps them make informed decisions about how they want to live with the condition.



MS-UK also offers a variety of online activities including exercise sessions, mindfulness courses and chair yoga classes, plus peer support groups, which all help the MS community to stay active and connected.

**Every legacy we receive helps make this work possible.**

# Sarah's story

**Sarah was diagnosed with multiple sclerosis in 2007. Before connecting with MS-UK, Sarah had not met anyone else affected by MS...**



“ I have strived all my adult life to be independent - financial independence and wellbeing have always been very important to me.

‘MS has presented some shaky moments over the years, particularly when I was first taken ill with MS, when I was diagnosed and when I’ve had relapses, I feel as independent now as I always did.

‘I think the unknown and an uncertain future made me feel very fearful and my feelings of independence were badly shaken for a while. However, I’ve come to learn that knowledge about MS is a powerful tool and this has helped me come to terms with my MS, as well as finding things that can help me maintain and achieve better independence now and in the future.

‘Being able to think and decide for myself is so important.



**Our supporters make it possible for MS-UK to be here for people like Sarah when she needs us.**

# How to get started

We know that it can be difficult to know where to begin when writing or updating a Will, so here's some information about getting started which we hope you find useful.



It's important to remember you do not need to face this alone and by speaking to a legal professional you can be supported through this process.

By having a Will you will provide security for your loved ones. A Will is a legally binding document, so you can have peace of mind that your wishes will be carried out.

## What is involved in making a Will?

### There are up to three stages in making a Will

- 1) Seeking advice on how best to structure your Will
- 2) Drafting your Will
- 3) Signing your Will



### You will also need to consider

Who will oversee your estate when something happens to you (Executor)

Where your Will is going to be kept once it is made. There may be a charge for storing your will and you need to let your Executor know where your Will is kept and how to access it.

## What will it cost?

According to Which.co.uk (March 2023) simple Wills start from £100 and can go up to several hundreds of pounds for more complex Wills.

It really does depend on your individual circumstances so it's a good idea to compare quotes from a few solicitors before going ahead with anything.

## Try our free Will writing service

We've partnered with The National Free Wills Network who have a network of 900 trusted solicitors in your local area who can help you write or amend a simple will at no cost.

You can refer yourself to the National Free Wills Network by requesting a free will writing pack by visiting [www.nationalfreewills.net/supporters-current/](http://www.nationalfreewills.net/supporters-current/)

The pack has details of local solicitors who you can contact to make an appointment.

Alternatively, please email your full name and address referencing legacy giving to [jill@ms-uk.org](mailto:jill@ms-uk.org) or call Jill on **01206 226500**.





## How to prepare

You don't need to have all the answers when you meet with someone to start writing your Will, as they are there to offer advice and support.

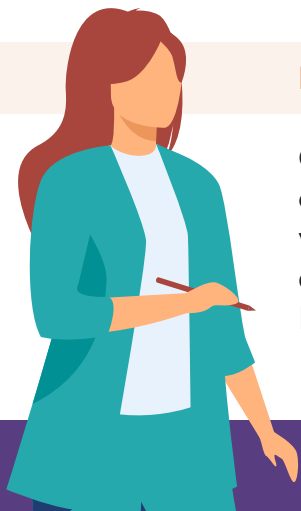


Your Will is completely unique to you, but there are a few things you can consider beforehand. This could include your funeral wishes or whether you would like to leave a certain piece of jewellery to a loved one.

It may be a good idea to write down a rough list of your finances, such as savings and investments and also make a list of your property and belongings, as this is what makes up a Will.

## What are executors?

An executor is a person or persons (you can have more than one) that you nominate to carry out the wishes you state in your Will. Naming someone as an executor doesn't stop them from being a beneficiary of your Will.



### Free your loved ones from inheritance tax

Gifts in wills to registered charities are free of inheritance tax (IHT). So, if the value of your estate is more than the tax threshold, a gift to charity could reduce the burden of IHT. Also, if you leave 10% or more of your

estate to charity, this can reduce the rate of IHT from 40% to 36% on some assets . To find out more about inheritance tax, visit [www.gov.uk/inheritance-tax](http://www.gov.uk/inheritance-tax)

## The types of gifts you can leave

There are four common types of gifts you can leave in your Will...

### Pecuniary gift

This type of gift is often considered the simplest. It is when you state an exact amount of money will be left to a particular person or charity. The amount of money will not change at all, unless you decide to change it yourself.

### Residuary gift

This is when you leave a specific share of your estate to a person or company. After you are sure all of your family and friends will be taken care of, anything left over goes into this gift.

### Specific gift

Rather than a particular sum of money, a specific gift could be a piece of jewellery, a family heirloom or even a house that you leave to someone.

### Non-specific gift

This is a general gift that doesn't outline any particular sum of money or item.

Speak to a professional about your legacy to make sure you leave the gifts that are just right for you.





## How will your gift make a difference?

- **£5,000** covers the cost of delivering 100 chair yoga sessions to help people with their mobility and aid relaxation
- **£10,000** covers the cost of providing 3,600 information booklets to support the MS community with common issues such as managing fatigue and diet and nutrition.
- **£15,000** covers the cost of running our national helpline for more than 5 weeks, offering information and emotional support to anyone affected by MS.
- **£20,000** covers the cost of running our peer support service for three months to keep people connected and reduce isolation



# Kayleigh's story



**Kayleigh shares how our multiple sclerosis helpline has made a difference in her diagnosis and acceptance journey...**

“ ‘I first discovered MS-UK via social media. I was looking for some support and information as I was going through acceptance around my illness.

‘I’ve used MS-UK’s Helpline on a number of occasions when I have needed emotional support or practical advice. It has been brilliant for me. The staff at the other end of the phone are informative and very friendly.

‘I felt like I was talking to a supportive friend when I rang the helpline. I always feel better after speaking to someone who understands. I’ve recommended the Helpline to friends with multiple sclerosis (MS) who need support or information. The MS-UK team are amazingly supportive – my partner has also benefitted from calling.

‘MS-UK has helped me get a better understanding of treatments, make sense of my symptoms, helped me transition to a wheelchair, as well as find support and connect with others with MS in the UK. It has improved my mood a great deal when I’ve called the helpline and I’ve felt supported. I couldn’t have done it without MS-UK.’





## What's next?

When you feel ready, you can begin writing or updating your Will. We recommend using our free Will writing service to find a solicitor in your local area or speaking with a trusted legal professional in the first instance.

### The Law Society

This is the independent professional body for solicitors. They have a search engine on their website that you can use to find a solicitor in your local area that can offer support with writing a Will. [solicitors.lawsociety.org.uk](http://solicitors.lawsociety.org.uk)

### Institute of Professional Willwriters

On this website you can search for members of the Institute of Professional Willwriters and find more information about what goes into a Will.

**0345 257 2570**

**[www.ipw.org.uk](http://www.ipw.org.uk)**

Thank you for considering leaving a gift for the next generation.

**With MS-UK, your memory will be honoured as we support even more people affected by multiple sclerosis.**

**<https://ms-uk.org/charity-gift-in-will/>**





## Stay in touch

MS-UK  
D3 Knowledge Gateway,  
Nesfield Road,  
Colchester,  
Essex, CO4 3ZL

[www.ms-uk.org](http://www.ms-uk.org)

X @MSUK6

f [www.facebook.com/MultipleSclerosisUK](http://www.facebook.com/MultipleSclerosisUK)

▶ [www.youtube.com/c/ms-ukorg](http://www.youtube.com/c/ms-ukorg)

in [www.linkedin.com/company/ms-uk](http://www.linkedin.com/company/ms-uk)

📷 [www.instagram.com/multiplesclerosis\\_uk](http://www.instagram.com/multiplesclerosis_uk)

Fundraising team

01206 226 500

[info@ms-uk.org](mailto:info@ms-uk.org)

**Registered Company Name**

Multiple Sclerosis-UK Limited, trading as MS-UK

**Company Number** 2842023

**Registered Charity Number** 1033731

**VAT Number** 632 2812 64

**Registered Office** D3 Knowledge Gateway,  
Nesfield Road, Colchester, Essex, CO4 3ZL



Registered with  
**FUNDRAISING  
REGULATOR**